

PROJECT PROPOSAL PRESENTATION

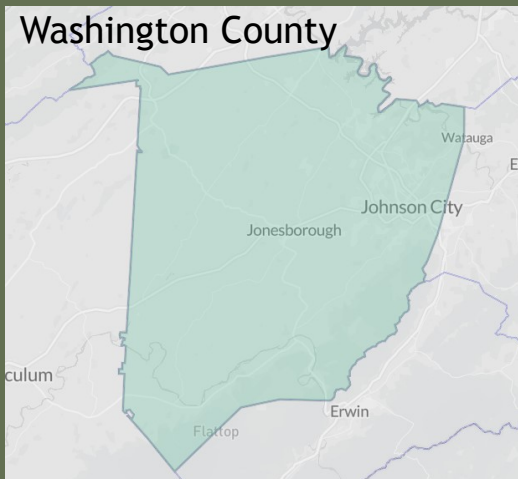
Town of Jonesborough & Washington County 2025 Parks & Recreation Grant Funding Proposal

Jonesborough Parks and Recreation

CENSUS POPULATION

2023 AMERICAN COMMUNITY SURVEY ESTIMATES

- Town of Jonesborough
 - Total Population: 6,056
 - Total Households: 2,549
- Washington County
 - Total Population: 138,420
 - Total Households: 56,629



The Town of Jonesborough is located in Washington County, TN

| 2020 Demographic Comparison | | Jonesborough | Tennessee | USA |
|-----------------------------|------------------------------------|--------------|-----------|-------------|
| Population | Annual Growth Rate | 1.58% | .85% | .5% |
| | Projected Growth Rate (2018-2040) | 14% | 15.8% | 13.6% |
| Households | Number of Households (2015 - 2019) | 2,064 | 2,597,292 | 120,756,048 |
| | Average Household Size | 2.24 | 2.51 | 2.62 |
| Age Segment Distribution | 0 - 4 years | 1.9% | 6% | 6% |
| | 5 - 17 years | 17% | 22.1% | 22.3% |
| | 18 - 64 years | 24.8% | 16.7% | 16.5% |
| | 65 years & up | 48.8% | 51.2% | 50.8% |
| R a c e Distribution | White | 94% | 78.4% | 76.3% |
| | Black / African American | 4.3% | 17.1% | 13.4% |
| | Asian | 1.3% | 2.0% | 5.9% |
| | 2 or More Races | .5% | 2.0% | 2.8% |
| | Hispanic/Latina | 1.8% | 5.7% | 18.5% |
| I n c o m e Characteristics | Per Capita Income | \$29,617 | \$29,859 | \$34,103 |
| | Median Household Income | \$56,550 | \$53,320 | \$62,843 |

[Jonesborough, TN - Profile data - Census Reporter](#)

TARGET DEMOGRAPHICS

- The Park/Trail Head and Frontier Trail project will continue to make recreational facilities available to all persons, regardless of age, gender, race, economic status, or possible disability.
- The proposed developments can be used by all ages.

Age

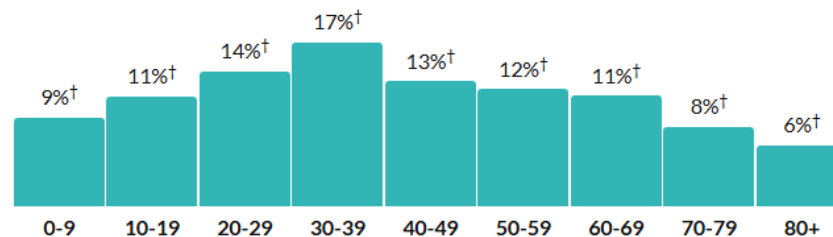
39.4

Median age

a little less than the figure in the
Johnson City, TN Metro Area: 42.1

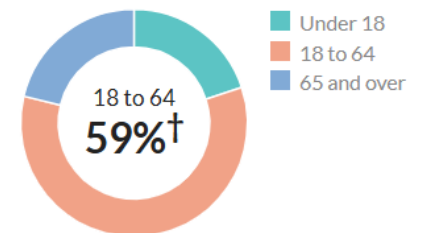
about the same as the figure in
Tennessee: 38.9

Population by age range



[Show data](#) / [Embed](#)

Population by age category



[Show data](#) / [Embed](#)

PUBLIC RECREATION ACTIVITIES/ PROGRAMS ENVISIONED AT PARK/TRAIL HEAD AND FRONTIER TRAIL

Proposed Development

- Improved pedestrian accessibility to park facilities through development of recreation trails to extend east to Johnson City city limits and connectors to Jonesborough's existing parks
- Expansion of recreation programming through development of kids' bike trail
- New ADA parking
- New restroom facilities
- Asphalt track resurfacing



PUBLIC RECREATION ACTIVITIES AND PROGRAMS AT PARK/TRAIL HEAD AND FRONTIER TRAIL

- Planned Park Facilities:
 - Kids' bike trail
 - Restroom Facilities
 - New Trail Development
 - Walking/running track
 - Seating, Bike Racks & Amenities



PUBLIC RECREATION/PROGRAMS

Existing Amenities

- **Jonesborough Middle School** football field and track in Jonesborough was part of the old middle school (no longer functions as a school) whose facilities were designated for school use. The Town is obtaining the property from Washington County Schools to be utilized as a park and trail head.
- **Lincoln Park**, located approximately ½ mile from the trail head location, is convenient to surrounding residential developments, the Jonesborough Senior Center. The park and Senior Center are located nearly halfway between Jonesborough's historic downtown and the proposed trail head location.
- **Stage Road Park**, located south of Main Street, off of Stage Road. The Town has obtained RTP funds to create a trail connector from the park to downtown and, if funding is received, there will be a trail connector from Spring Street to Scott Lane to create a trail connector from Stage Road Park to East Main Street.
- **Tiger Park**, which is nearing completion, located adjacent to the new Jonesborough Elementary School, has trails on site now and this project will create a critical trail connector from Saylor's Place, along May Drive, to West College Street.



POSITIVE COMMUNITY IMPACT

- This project is a co-operative effort between the Town Jonesborough and Washington County to create a pedestrian trail connection to Johnson City. Completion of this project will result in positive impact on residents of Jonesborough, Washington County and Johnson City
- Addresses the needs, interest and priority the community detailed during the 2025 Parks and Recreation Master Plan Update. Improve public health by encouraging outdoor physical activity
- Development of Park/Trail Head
 - Parking lot to include ADA Parking
 - ADA Restroom Facility
 - Bike trail for youth to learn and develop biking skills
- Accessible to all citizens regardless of abilities
- Development of recreation trail with eventual connection to Tweetsie Trail and connections to existing Lincoln Park, Stage Road Park and Tiger Park.
- Improve public health by encouraging outdoor physical activity, including use of recreation trails
- Fosters a working relationship between the Town, Washington County and Washington County Schools.

GOAL OF PROJECT

- Addresses needs as identified in the 2025 Parks and Recreation Master Plan Update
- Extends the existing recreation trail in Jonesborough to Jonesborough's corporate limits, into Washington County and to Johnson City city limits.
- Create trail connections to existing Lincoln Park, Stage Road Park and Tiger Park.
- Create pedestrian connections for the densely populated areas along the project route
- Expand recreation activities and programs to underserved areas of Town and County
- Encourage outdoor physical activity
- Increase quality of life by providing recreation opportunities to residents in Jonesborough and Washington County.

MEANS & FUNDING FOR DEVELOPMENT

- TDEC Local Parks and Recreation Grant Funding
- Value of Land Match
- Remaining Cash Match from an allocation from Governor Bill Lee in the state's budget

SUITABILITY, LOCATION, & TOPOGRAPHY FOR DEVELOPMENT OF PROJECT

- The proposed park/trail head location is at the old Jonesborough Middle School track and football field off of Forest Drive. The old concrete bleachers will be removed for safety reasons and the restroom facility, parking lot and kids' bike trail will be developed at the trail head site. Existing asphalt track will be overlayed with new asphalt to address maintenance needs.
- The recreation trail will be constructed from the new trail head site and connect to the existing trail on East Main Street. Additional trail construction will pick up at Hometown Road and progress east to the corporate Jonesborough limits. From there, the trail will continue to Johnson City city limits through Washington County. Other trail connections will be made from Spring Street to Scott Lane and along May Drive from West College Street to Saylor's Place development.
- The location for all elements of the project are located in close proximity to residential areas. The trail will help connect Jonesborough residents to nearby Jonesborough Senior Center, Lincoln Park and Jonesborough's downtown district, Stage Road Park and Tiger Park.
- All proposed new facilities will be constructed in locations where minimal site work and grading will be necessary.

SITE DEVELOPMENT

- The proposed project addresses park needs identified in the 2025 Master Plan Update
 - Recreation Trail Development
 - ADA Compliance
- Future Site Development
 - Potential addition of playground and other park amenities at the park/trail head



PROGRAMMING PLANS FOR SITE

Park/Trail Head

- Proposed:
 - New park development
 - Restroom Facility and amenities
 - Kids' Bike Trail
 - Connection to existing Recreation Trail
- Re-paving of existing asphalt track



STATE COMPREHENSIVE RECREATION PLAN OBJECTIVE: ADVOCACY AND EDUCATION

- Jonesborough's proposed project would create an extension of existing recreation trails. The trail would connect the new Trail Head to Johnson City city limits, and residences in between. Residences along Forest Drive and East Main Street/Old Jonesborough Highway will be provided pedestrian access east to the Tweetsie Trail in Johnson City and west to Lincoln Park, Jonesborough's historic downtown as well as numerous other parks in Jonesborough, south to Stage Road Park and at the northwest end of town to Tiger Park.
- The restroom facility will provide convenient means for users of the trail to access restroom at the trail head location.
- Development of a kids' bike trail will provide a safe and convenient location for youth to learn how to ride a bike and develop bike skills.
- Development of the bike trail and recreation trail will provide a means for expanding programming to promote healthy living, increasing quality of life.



STATE COMPREHENSIVE RECREATION PLAN OBJECTIVE: ADVOCACY AND EDUCATION

Goal: Advocate for improved connectivity and access

Jonesborough's proposed project is creating a recreation trail connection between parks. In addition, a spur trail would provide pedestrian access to Stage Road Park, located south of Main Street, Lincoln Park and Lincoln Park. This will provide a way for residents to walk into downtown and to Jonesborough parks.

Goal: Create partnerships for distributing educational resources and education

There are a number of residents/partners within the project area who have approached the Town, voicing their need for pedestrian access. Word-of-mouth is a viable way to educate other residents about the recreation resources available in the community. Those residents' support of the project will also help cultivate ownership to the Town's recreation resources, giving them personal responsibility for the success of the programs.

STATE COMPREHENSIVE RECREATION PLAN OBJECTIVE:
COLLABORATION AND PARTNERSHIP FOR ECONOMIC SUCCESS

Goal: Develop Partnerships

Historically, when it has come to recreation development, the Town has taken a lead in forming partnerships, big and small, to make projects successful. This project will require cooperation with and joint ownership by residents along the project route, a successful working relationship with Washington County, the named partner for this grant project.

Goal: Identify Communication Strategies

Jonesborough has a Tourism and Marketing Director, a Website Manager, and a Social Media Coordinator on staff, and the programs, activities and facilities associated with activities at the Trail Head and Frontier Trail are highlighted in Jonesborough's quality on-going marketing and communication program.

STATE COMPREHENSIVE RECREATION PLAN OBJECTIVE: CONSERVATION

Goal: Develop direct land conservation policies and strategies that address each of the three focal areas to ensure equity and inclusion and meet to diverse needs of Tennesseans.

A large portion of the proposed recreation trail is within the public right-of-way.

Goal: Collaborative actions to enhance local tourism

The Tweetsie Trail, a rails to trails project in Johnson City, is a multi-use recreation trail and regional attraction for recreation enthusiasts. Creating a connection to the trail from Jonesborough will help increase recreation tourism in the area. In addition, Jonesborough's historic downtown, a tourism attraction on its own, when coupled with the development of the Frontier Trail, will also help to increase the tourism draw to the area.

Helps to ensure underserved communities have access to parks and outdoor recreation facilities.

The pedestrian connection to the Tweetsie Trail, other Jonesborough parks and downtown will help connect underserved residents as well as lodging and tourist attractions on the east side of Jonesborough.

Goal: Develop a land acquisition and stewardship plan for outdoor recreation

Jonesborough's project increases the Town's land for parks and recreation activities.

STATE COMPREHENSIVE RECREATION PLAN OBJECTIVE:

INCLUSIVITY, DIVERSITY, ACCESS, AFFORDABILITY, EQUITY

Goal: Ensure that all parks will be places where all communities can engage with nature in positive ways

Jonesborough takes seriously its responsibility in providing services, programs, activities, and events that serve all segments of its population, and intentional efforts are made to attract and engage minorities and to ensure access to the disabled. The proposed project will meet ADA requirements where required and all programming will seek a diversity in participation.

PROJECT DESIGN ELEMENTS

Trail Head & Recreation Trail Project

■ Use of Site

- Proposed restroom facility, new parking lot with ADA compliant parking spaces.
- Proposed bike trail will be ADA compliant
- ADA accessible features and walkways will ensure that all citizens are able to use the new facilities

PROJECT DESIGN ELEMENTS

Trail Head & Recreation Trail Project

- **Access**

- The park is open to citizens between sunrise and sunset

- **Ease of Maintenance**

- The Town of Jonesborough has successfully developed and maintained numerous parks throughout the Town and has experience in maintaining trails and open spaces.
- The proposed project activities will not create any new routine operational maintenance responsibilities for the maintenance staff.

PROJECT DESIGN ELEMENTS

Trail Head & Recreation Trail Project

Total Project: \$3,083,599

Restroom Facilities: \$525,000

Parking Lot: \$100,000

Track Resurfacing: \$15,000

ADA Compliance: \$300,000

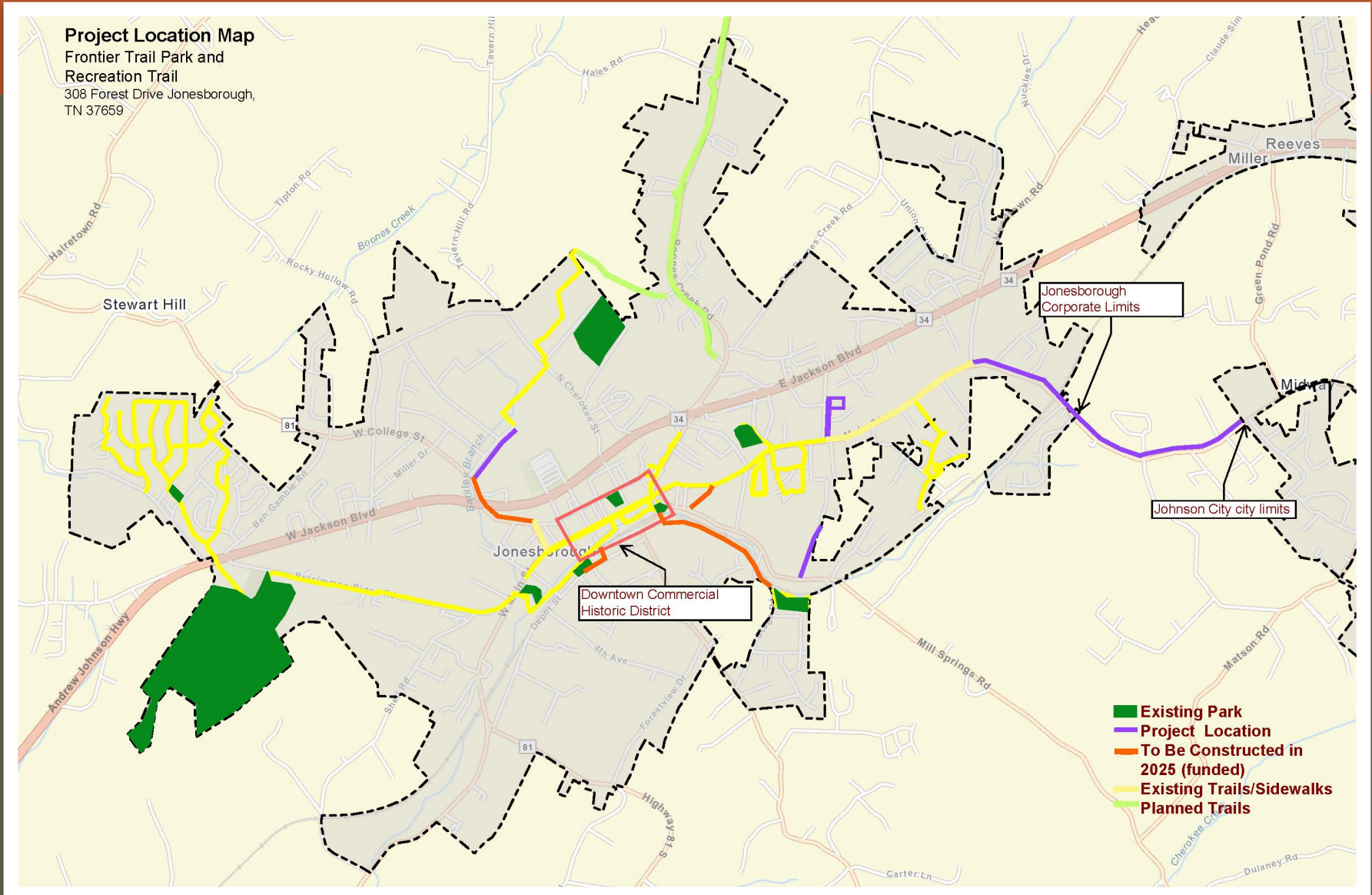
Recreation Trail Construction: \$1,500,000

Grading, Utilities, etc.: \$756,401

PRELIMINARY SITE PLAN FRONTIER TRAIL

PRELIMINARY SITE PLAN FOR PARK AND TRAIL HEAD

PROJECT LOCATION MAP



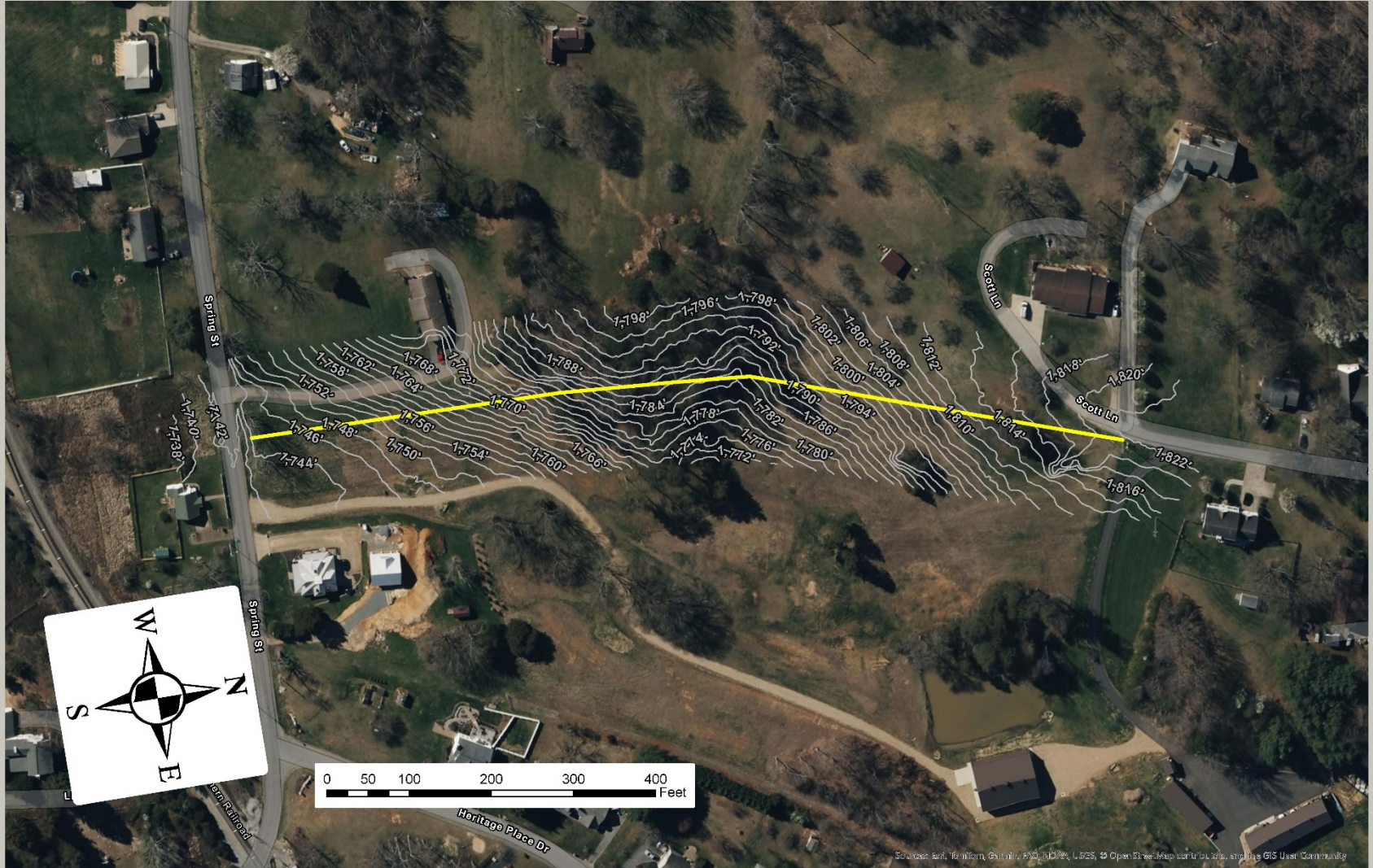
3-YEAR PROJECT TIMELINE

- Submit Application April 2025
- Notification of Funding August 2025
- Environmental Clearance 2025 August - December
- State Contracting December 2025
- Project Design January - April 2026
- Bidding & Award May 2026
- Construction July 2026
- Project Close-out January 2027

TOPOGRAPHIC MAPS



TOPOGRAPHIC MAPS



TOPOGRAPHIC MAPS



TOPOGRAPHIC MAPS



TOPOGRAPHIC MAPS



**THANK YOU FOR
COMING!**